



Sustainable Frome

and the

Energy Descent Action Plan

who are we / what is it?

a presentation by Katy Duke, member of the FEDAP
group of Sustainable Frome, town in transition

www.sustainablefrome.org.uk

Meetings & food!



Creative solutions to power Frome in the future

DRAFT mission statement is;

To create a vibrant and sustainable community unleashing the collective genius of Frome to face the twin challenges of Peak Oil and Climate Change.

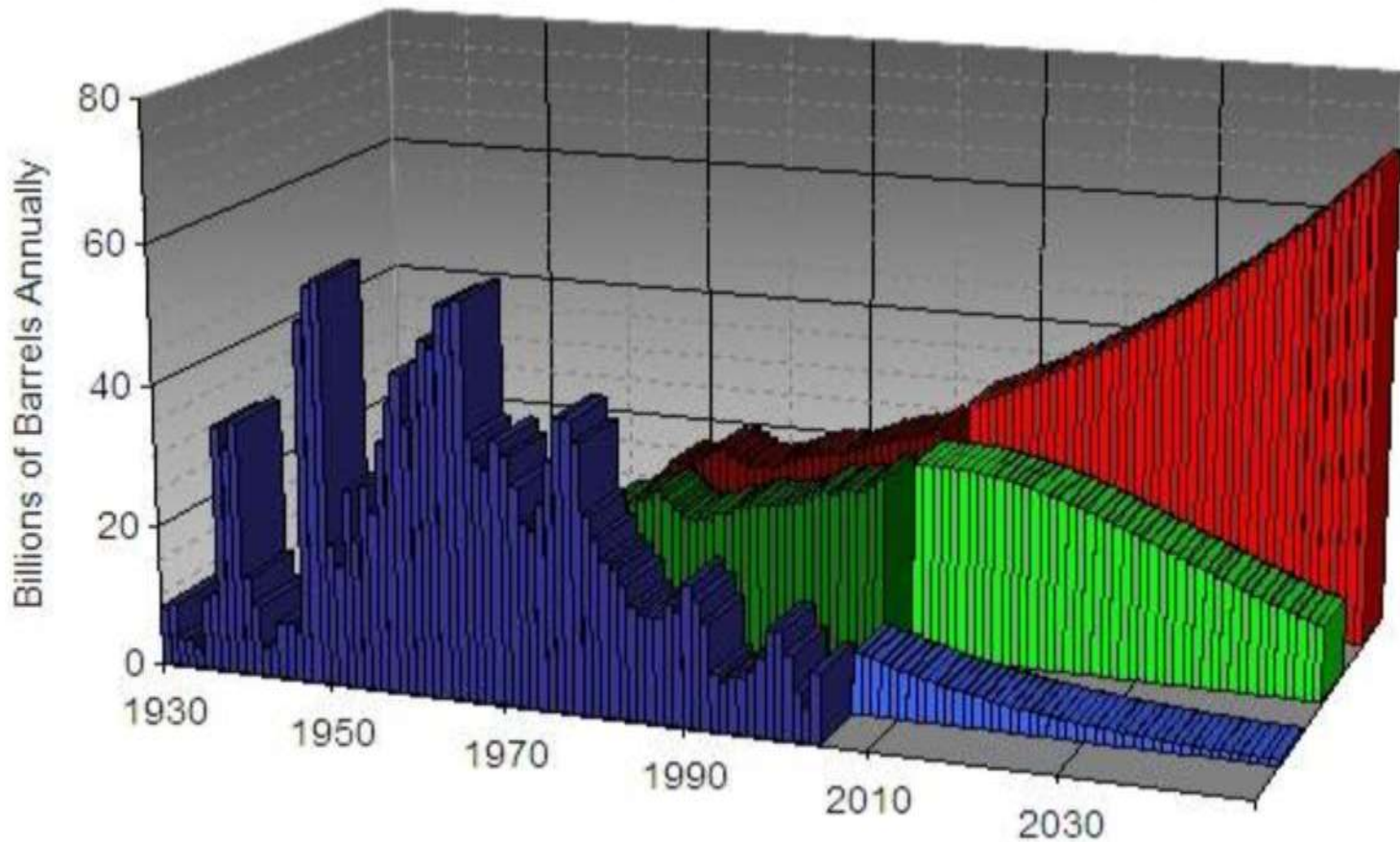
We believe a town using much less energy and resources than at present will be more resilient and can also be more abundant and pleasurable.

Please join us and help to make this vision a reality



The oil problem

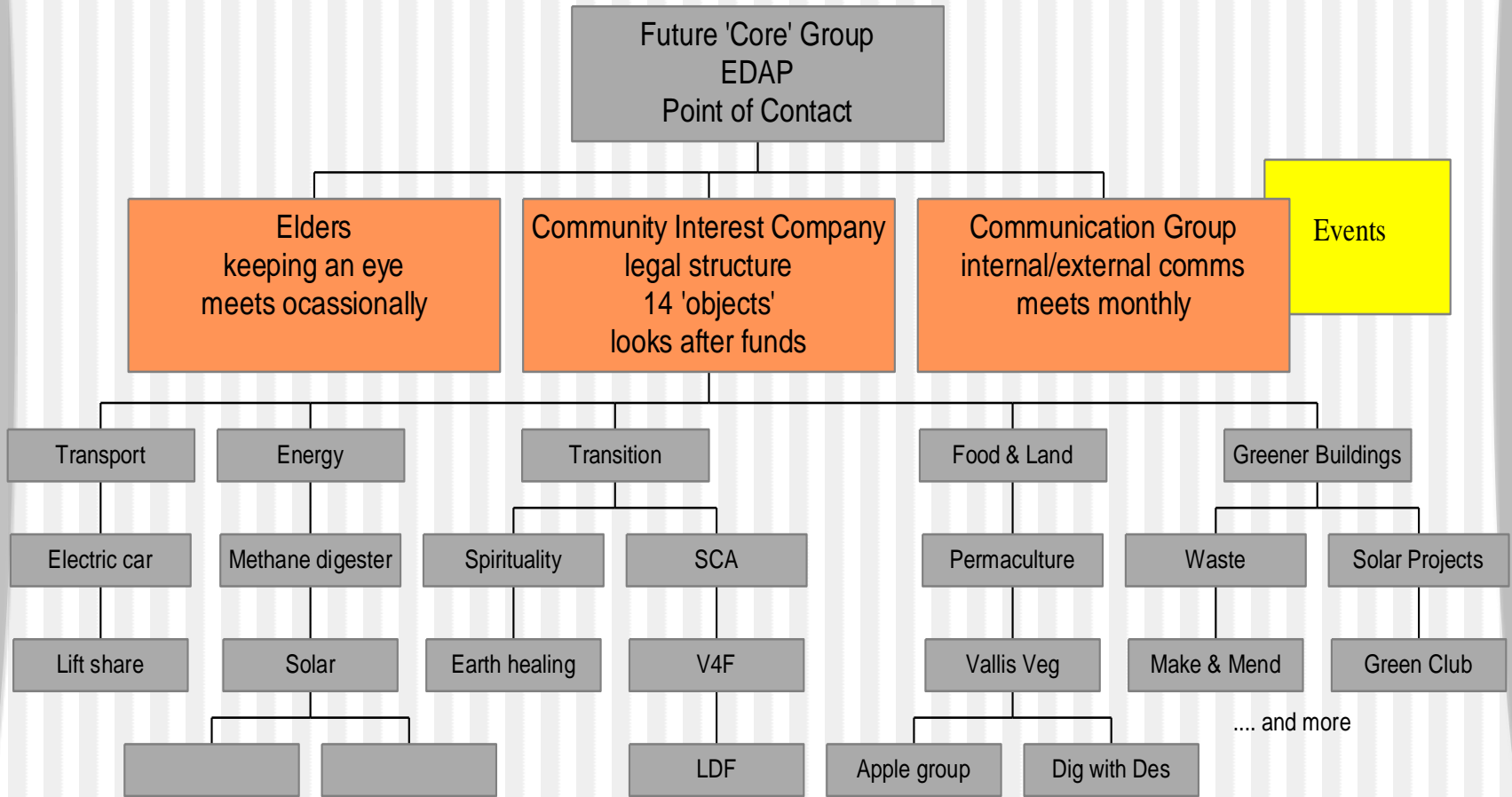
World Overview (Discovery, Production and Demand)



■ Annual Discovery ■ Projected Discovery ■ Annual Production
■ Projected Production ■ Annual Demand ■ Projected Demand

Data Sources: EIA, BP, ExxonMobil

Structure of SF



Interest groups



Vallis Veg



Website & forum

Sustainable Frome, town in transition

Main / HomePage

MENU



DISCUSSION FORUM

[Calendar of events](#)

[More about SF](#)

[Topic Groups](#)

[Key documents](#)

[Useful Links](#)

[Contact Us](#)

[12 steps progress](#)

[Transition Towns](#)

[Transition Culture](#)

[Food Frome](#)

[Transition Glastonbury](#)

[Transition Bristol](#)

[Transition Bath](#)

Welcome to the home of Sustainable Frome, exploring how to prepare for a carbon constrained, energy lean world. Sustainable Frome meets every first Thursday of the month at the Masonic Hall, North Parade, [Frome](#) at 7pm. Come along ... and please bring some local food to share and £1 for the hall hire. SF strives to be inclusive, imaginative, practical and fun. Want to get involved? Why not join a project? It's fun and easy, you don't have to be an expert, you will meet lots of interesting people, strengthen your community, and learn new skills. What could be better than that? For more on CORE GROUPS & INTEREST GROUPS go [here](#). Please join us in conversation on our [discussion forum](#). **NEW ADDITION - [Events List](#)**.

Our DRAFT mission statement is; - **Creative solutions to power Frome in the future**

We want to create a vibrant and sustainable community unleashing the collective genius of Frome to face the twin challenges of Peak Oil and Climate Change. We believe a town using much less energy and resources than at present will be more resilient and can also be more abundant and pleasurable.

Please join us and help to make this vision a reality.

EVENTS, GROUPS & PROJECTS

▪ [EVENTS AND CONTACTS](#)

[Food & Land](#) * [Apple Group](#) * [Greener Buildings](#) * [Lift Sharing](#) * [Energy](#) * [Transition Network](#) * [Transport](#) * [Waste](#) * [Finance & Business](#) * [Make and Mend](#) * [Earth Healing](#) * [Green Club](#) * [Spirituality](#)

"You never change things by fighting the existing reality. To change something, build a new model that makes the existing model obsolete." Buckminster Fuller



www.transitionfrome.org.uk

The Transition Network group

Who we are....

What we are focussing on

- Energy Descent Action Plan
- Sustainable Communities Act
- Links to Transition Network
- Links to government



How should we respond?

- Business as usual (HEAD IN SAND)
- Techno-fix (TAKE A RISK)
- Responses from business / Shell
- Government decisions
- Fuel costs rising
- Sustainability / self-sufficiency
- **TRANSITION NETWORK**



FUELLING THE FUTURE



Transition Towns 12 steps

1. Set up a steering group and design its demise from the outset
2. **Awareness raising**
3. Lay the foundations (networking with existing groups and activists)
4. **Organize a Great Unleashing**
5. Form sub groups
6. **Use Open Space meetings**
7. Develop visible practical manifestations of the project
8. **Facilitate the Great Reskilling**
9. Build a bridge to Local Government
10. **Honour the elders**
11. Let it go where it wants to go...
12. **Create an Energy Descent Plan** (target Sept 2010)



The cheerful disclaimer

(from Rob Hopkins) “*We truly don't know if this will work. Transition is a social experiment on a massive scale.*”

What we are convinced of is this:

- if we wait for the governments, it'll be too little, too late
- if we act as individuals, it'll be too little
- but if we act as communities, it might just be enough, just in time.

and

- Climate change makes this carbon reduction transition essential
- Peak oil makes it inevitable

Transition initiatives make it feasible, viable and attractive (as far as we can tell so far...)

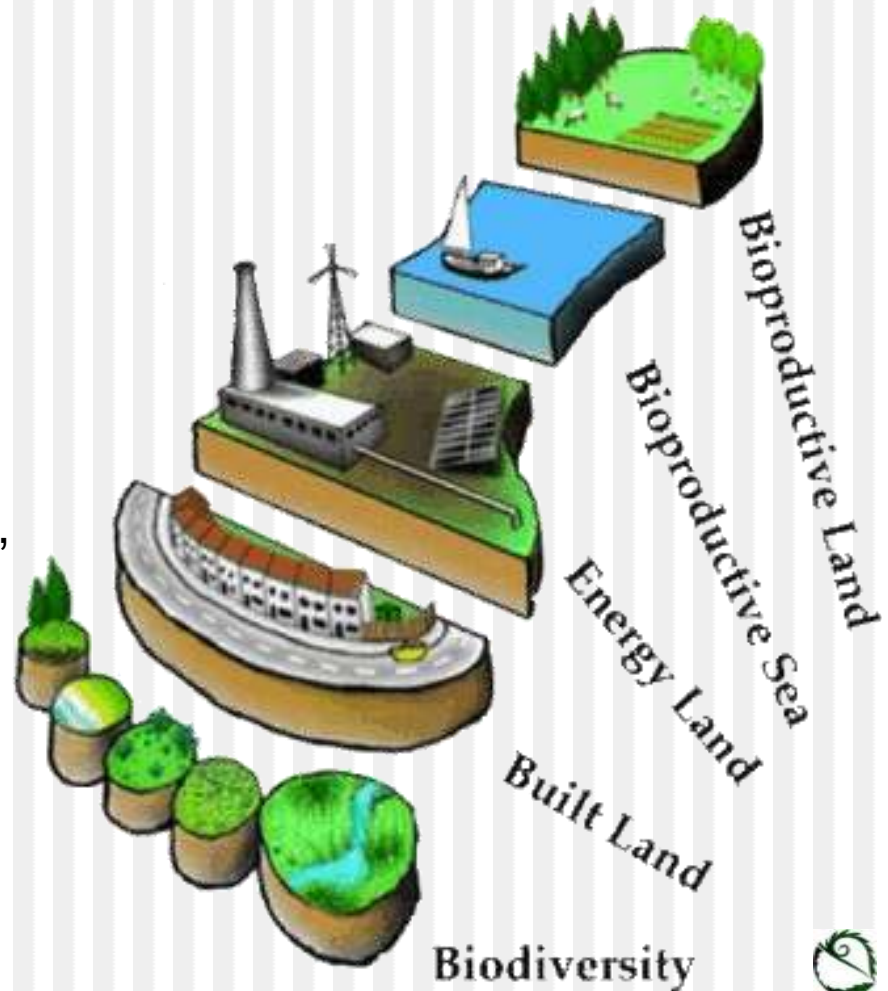
Boundary for study



Carbon/ecological footprint

Carbon Trust Definition 'The total set of greenhouse gas emissions caused directly and indirectly by an [individual, event, organisation, town] expressed as CO₂e.'

Although the focus of current policy and science is on accounting for greenhouse gases, constraints on other resources such as food are also becoming increasingly apparent. The ecological footprint is a broad measure of resource use which highlights where consumption is exceeding environmental limits.



Targets from the community

SMART and aspirational targets to take us to 2035....

eg. Increase in community buses

Decrease in shoppers at supermarkets

Percentage of children eating locally produced school dinners

Increase in fruit trees planted on public land

Percentage of houses with solar panels

Increase in woodland, etc.

Do it step by step:

Vision for 2035 leads to.....

Targets for 2035

Then set targets for 2015,

2020,

2025,

2030



FEDAP matrix

Frome Energy Descent Action Plan - DRAFT OVERVIEW

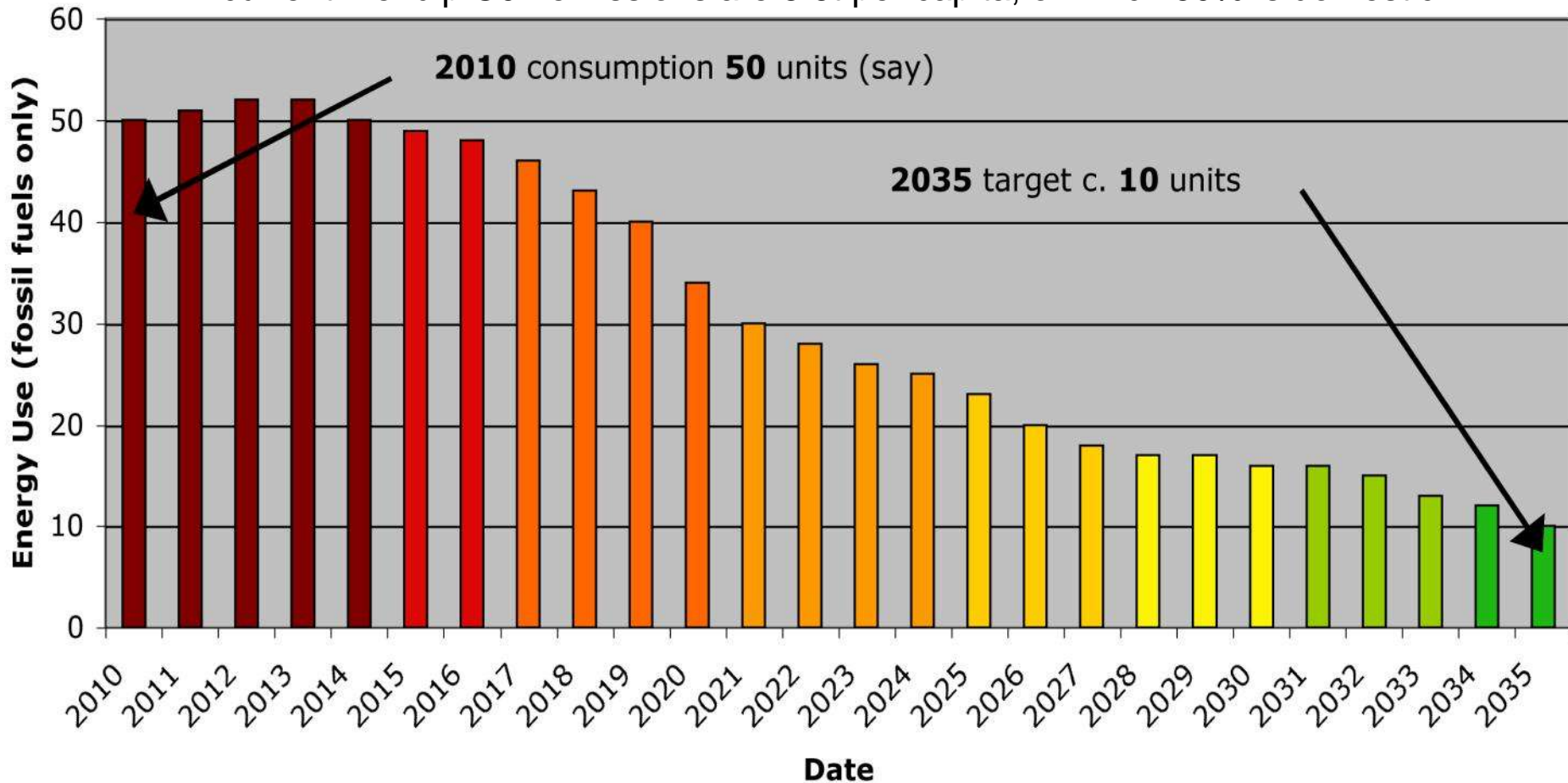
	2008	2009	2010	2011	2012	2013	2014	2015
Policy				YR 1	YR 2	YR 3	YR 4	YR 5
1 Planning	LDF core strat	LDF action plans						
2 Vision for Frome	V4F adopted	V4F merged w FEDAP						
3 Energy Descent	Transition training	FEDAP drafted	FEDAP adopted					
Sustainable Frome Key Actions	Carbon Footprint	Land Audit	FEDAP					
KEY PROJECTS	*** NB these are just suggestions at this stage ***			LIFELONG LEARNING CENTRE	FROME SLOW FOOD CENTRE	SUSTAINABLE FROME CENTRE	ENERGY CENTRE	
	2008	2009	2010	2011	2012	2013	2014	2015
		FEDAP drafted	FEDAP adopted	YR 1	YR 2	YR 3	YR 4	YR 5
ENERGY	carbon footprint of whole town	Identify sites, land negotiations	Funding, design, planning	First energy project completed	Second project commenced	wind turbine no. 1	Energy Centre opens	2GW
HOUSING	identify targets	energy reduction plan	sites for new build schemes	2 ecohomes built, 40 homes have energy makeovers	8 new, 280 existing	50 new, 1500 existing		50% of target properties have been improved
YOUTH	key projects	Youth Café finds permanent home		expand into LLC				
ELDERS	key projects				expand into LLC			
LAND MANAGEMENT	Audit existing	identify strategy, Frome Forest, etc.			land management training courses			
EDUCATION	Audit existing, FETE adopts Trust status, new classes at FETE	Lifelong Learning Centre designed	LLC constructed	LLC opens, with low energy focus		Sustainable Frome Centre opens		
TRANSPORTATION	Projects identified, car club set up	car club formalised, audit existing	sites for biofuel, methane, LPG, waste to fuel	campaign for low energy public transport				
HEALTH & WELLBEING	Audit existing	energy reduction plan	sites for new health facilities		expand into LLC			
FOOD	Food Frome expands, food miles identified	key projects		food training at LLC	Slow Food Centre opens			
ECONOMY & LIVELIHOODS	identify good practise, time banking, NEF, etc.	identify new local opportunities, RE companies	business, site for Frome Energy Centre					
WASTE	reduce, reuse, recycle	identify options	sites for waste to energy schemes		waste to energy scheme completed			



How it might look

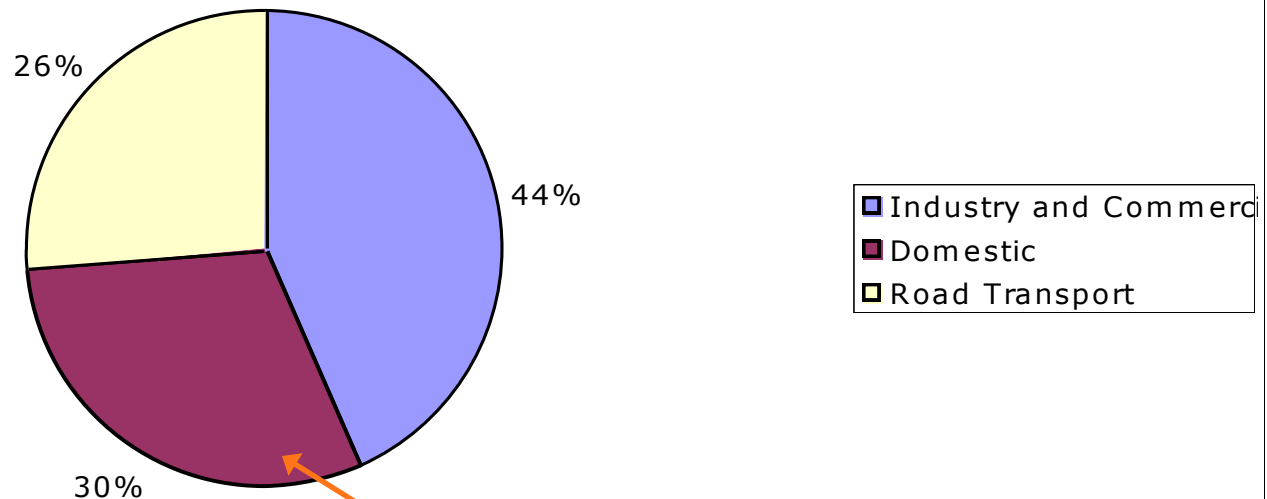
Energy Descent Path

NB. current Mendip CO2 emissions are 8.6t per capita, of which 30% is domestic



Mendip emits 934kt of CO₂ pa

Mendip CO₂ emissions 2006

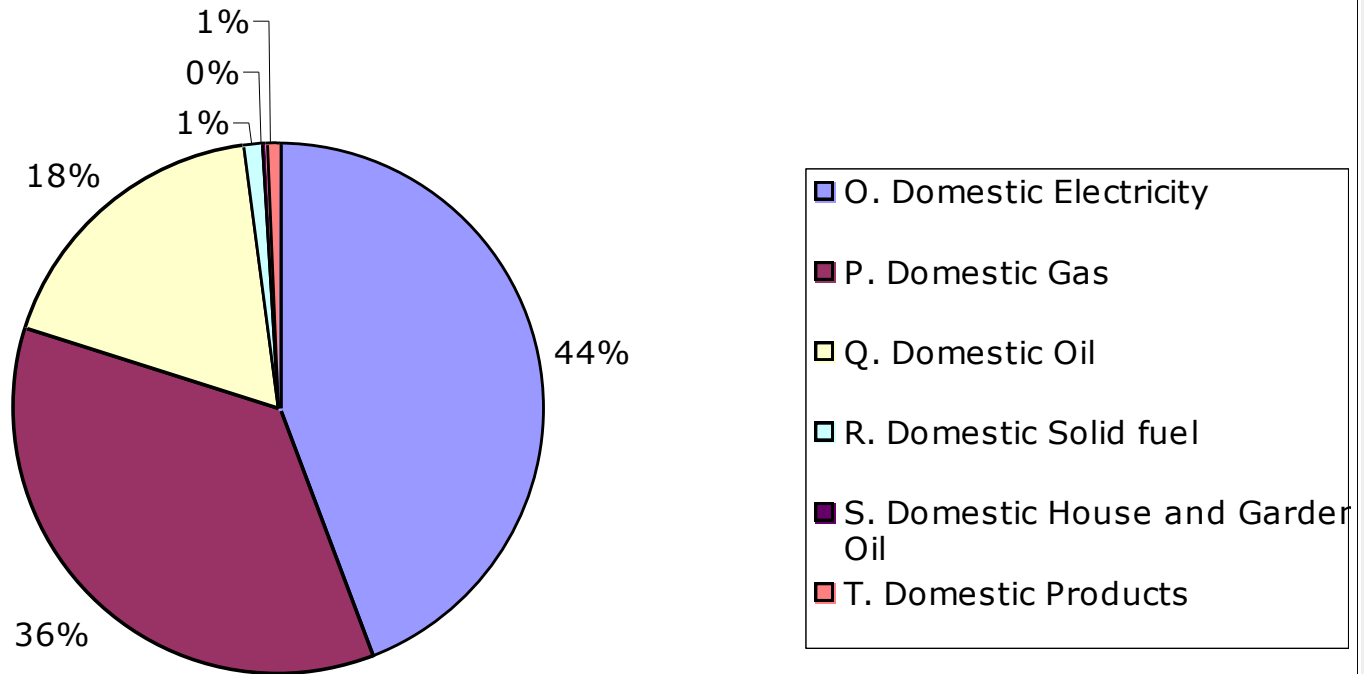


domestic 30%



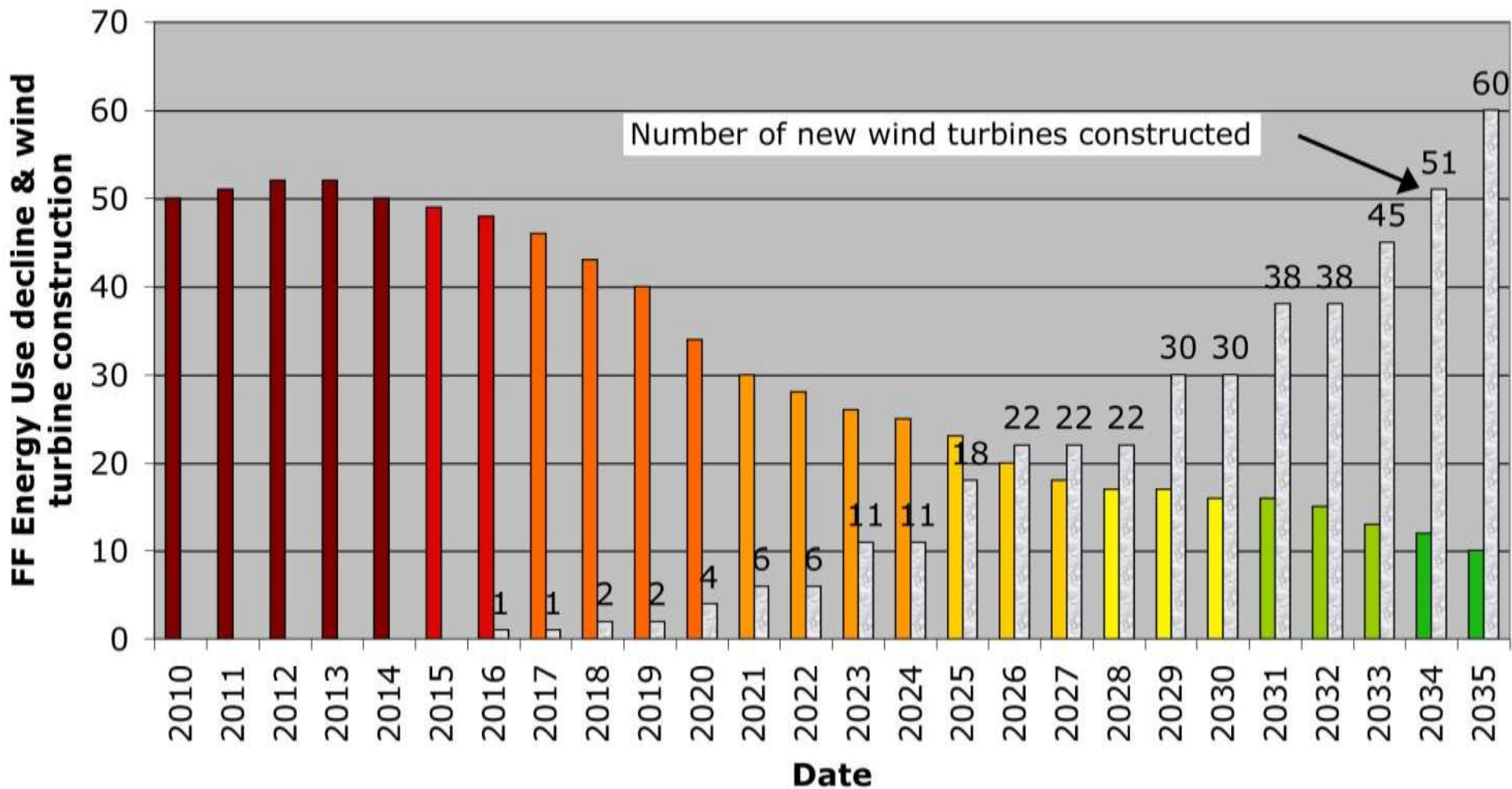
Domestic emissions for 2006

Mendip Domestic CO2 emissions




Increase in renewables

Energy Descent Path showing renewables increasing



Ideas for the next 12 months

- General awareness raising through;
 - Film Shows, posters, leaflets, events, etc.
- Keep in touch with TN & local authorities
 - training & presentations
 - Influence policy but stay a-political
- Programme of events to create the FEDAP, which might include....
 - Great Unleashing at Frome Festival (Rob is coming!)
 - Transition Timeline project (2010 - 2035)
 - Transition Tales (what is life like in 2020/2035?) 

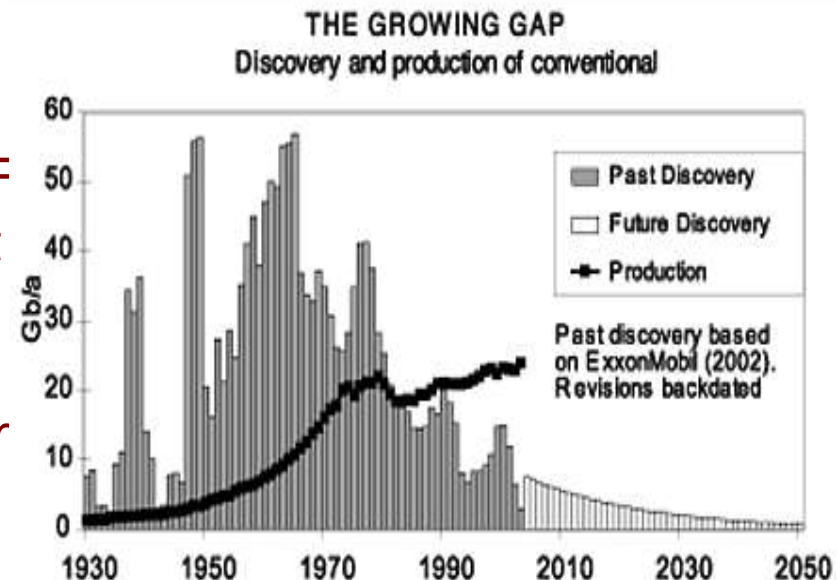
Summary actions

Putting together the Energy Descent Action Plan

Needs: Carbon Footprint, your ideas/targets, community buy-in and awareness raising

Tie in with:

Local government
especially planning /LDF/ V4F
Sustainable Communities Act
Transition Somerset
Transition Network
Linking with Sustainable From
and **whole community**.



We need your help us make this happen!



North Frome detail



North Frome generation



Proposed Frome Forest



Detail near Buckland Dinham



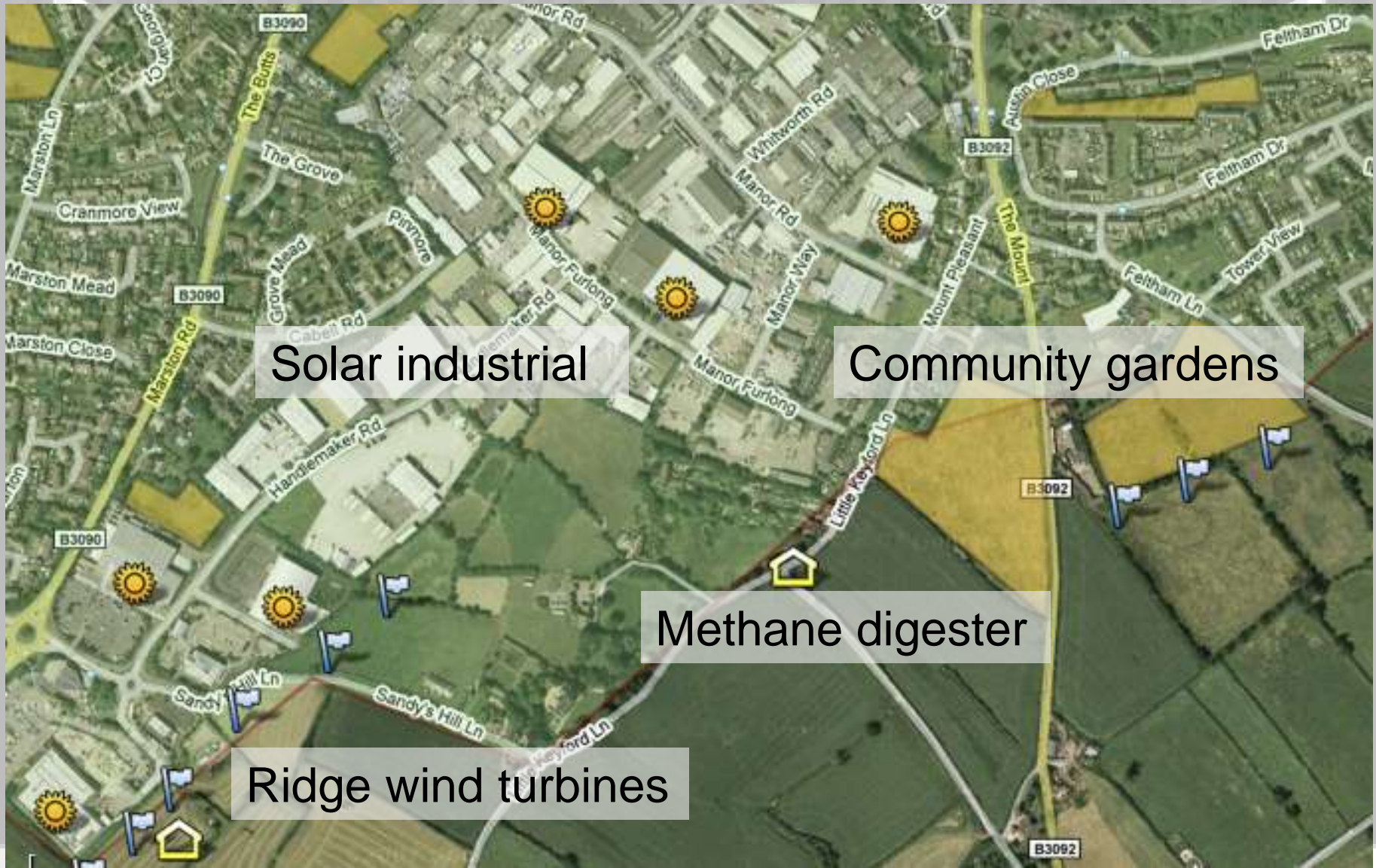
NW Frome ideas



NW with satellite photo



South Frome solar/wind



Solar industrial

Community gardens

Methane digester

Ridge wind turbines

Asda area - solar, allotments & fish farm



Frome overview





keep talking!